



THE N RESIDENCES

IBIZA

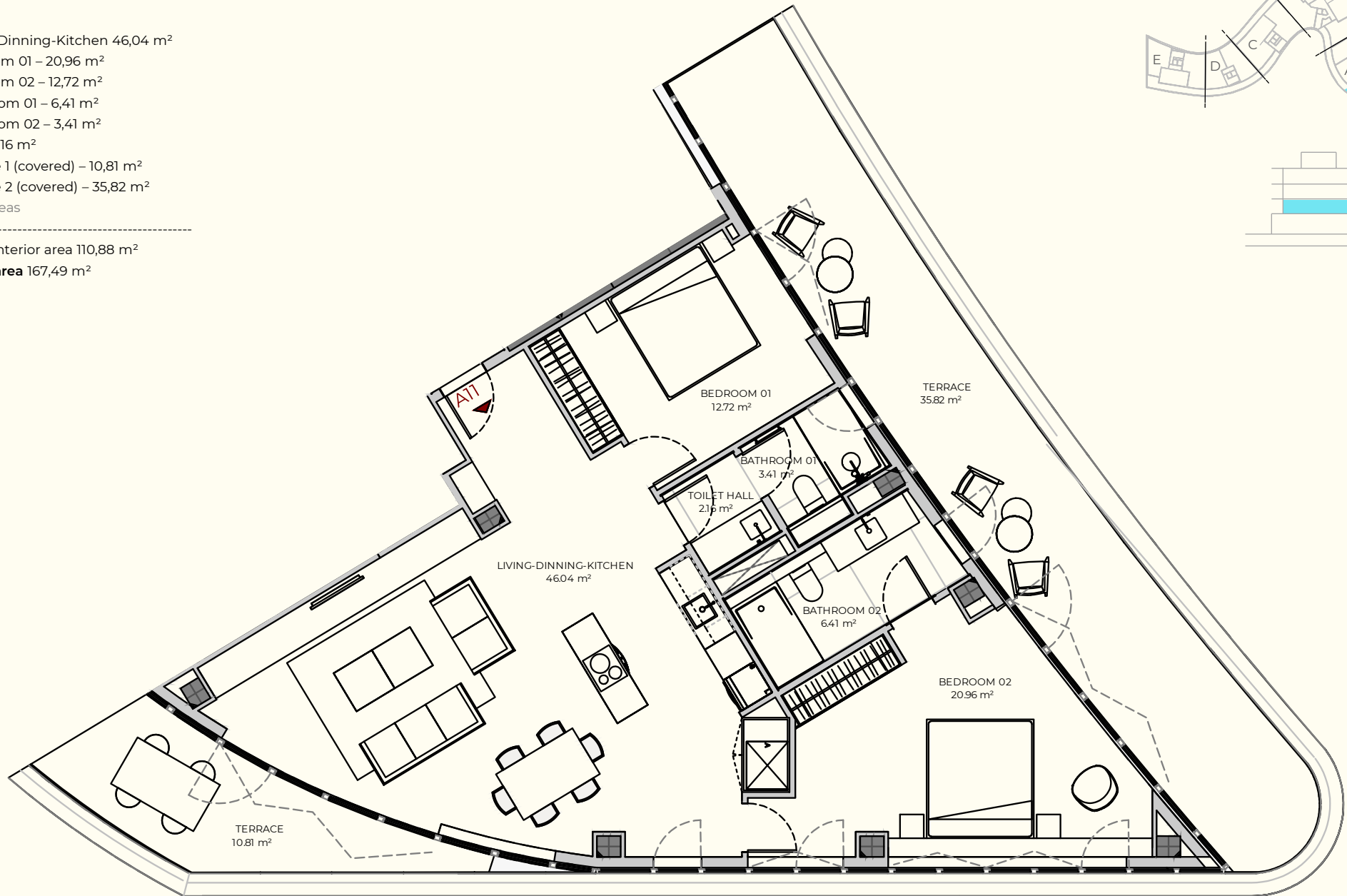
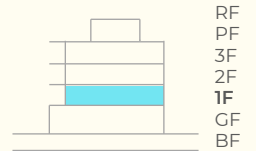
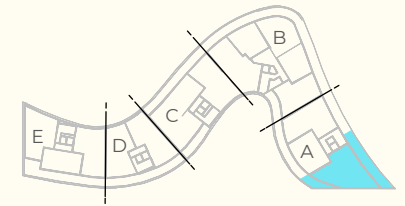
GENERAL DISTRIBUTION PLANS



Apartment A11

- Living-Dinning-Kitchen 46,04 m²
- Bedroom 01 – 20,96 m²
- Bedroom 02 – 12,72 m²
- Bathroom 01 – 6,41 m²
- Bathroom 02 – 3,41 m²
- Hall - 2,16 m²
- Terrace 1 (covered) – 10,81 m²
- Terrace 2 (covered) – 35,82 m²
- *Net areas

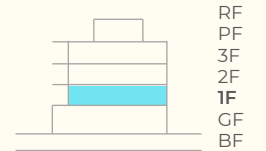
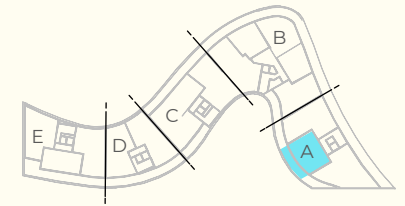
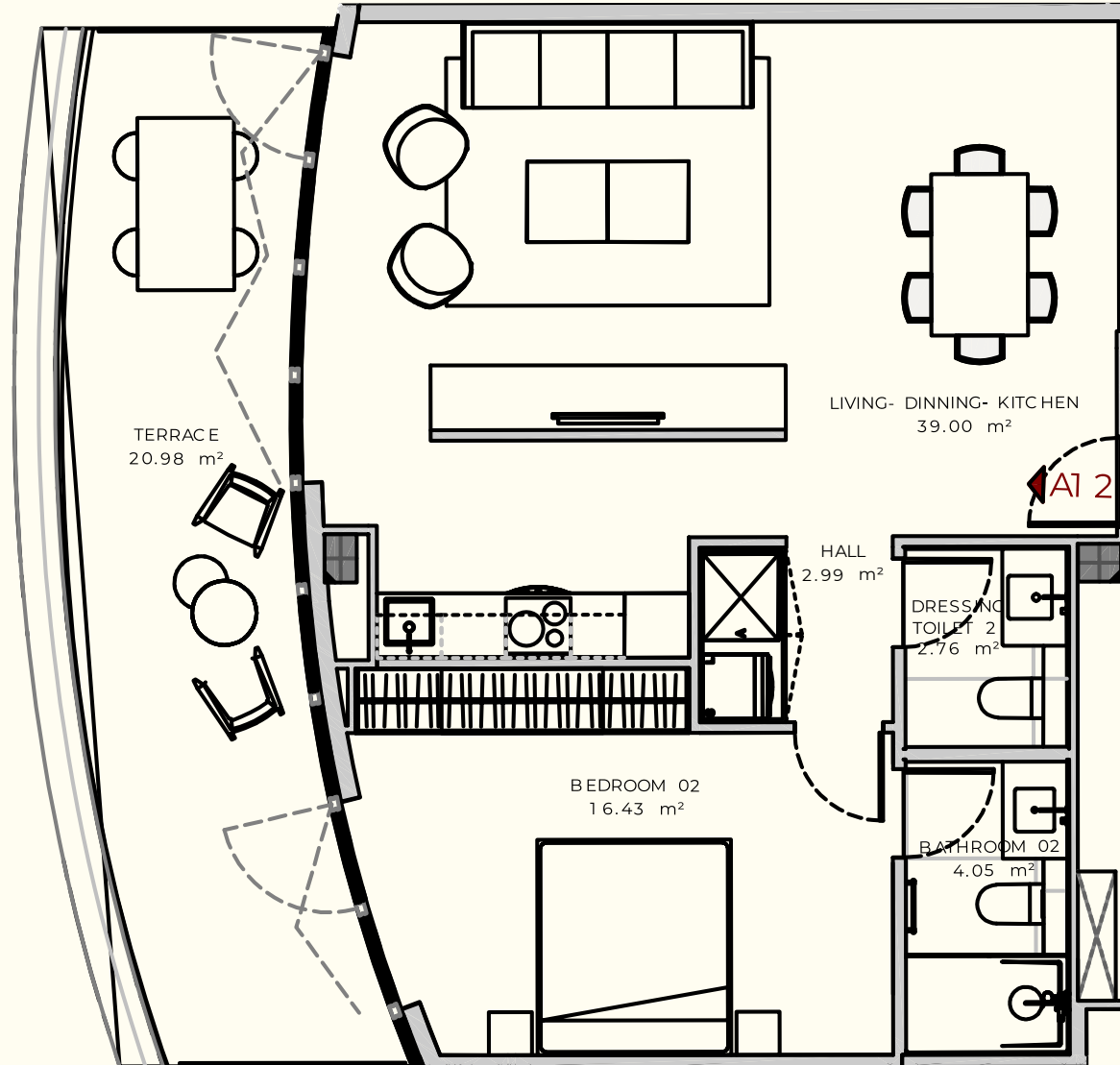
 Gross interior area 110,88 m²
Gross area 167,49 m²



Apartment A12

Living-Dinning-Kitchen 39,00 m²
 Bedroom – 16,43 m²
 Bathroom – 4,05 m²
 Dressing Toilet – 2,76 m²
 Hall – 2,99 m²
 Terrace 1 (covered) – 20,98 m²
 *Net areas

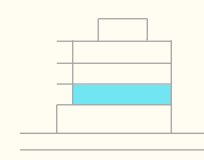
 Gross interior area 72,95 m²
Gross area 97,31 m²



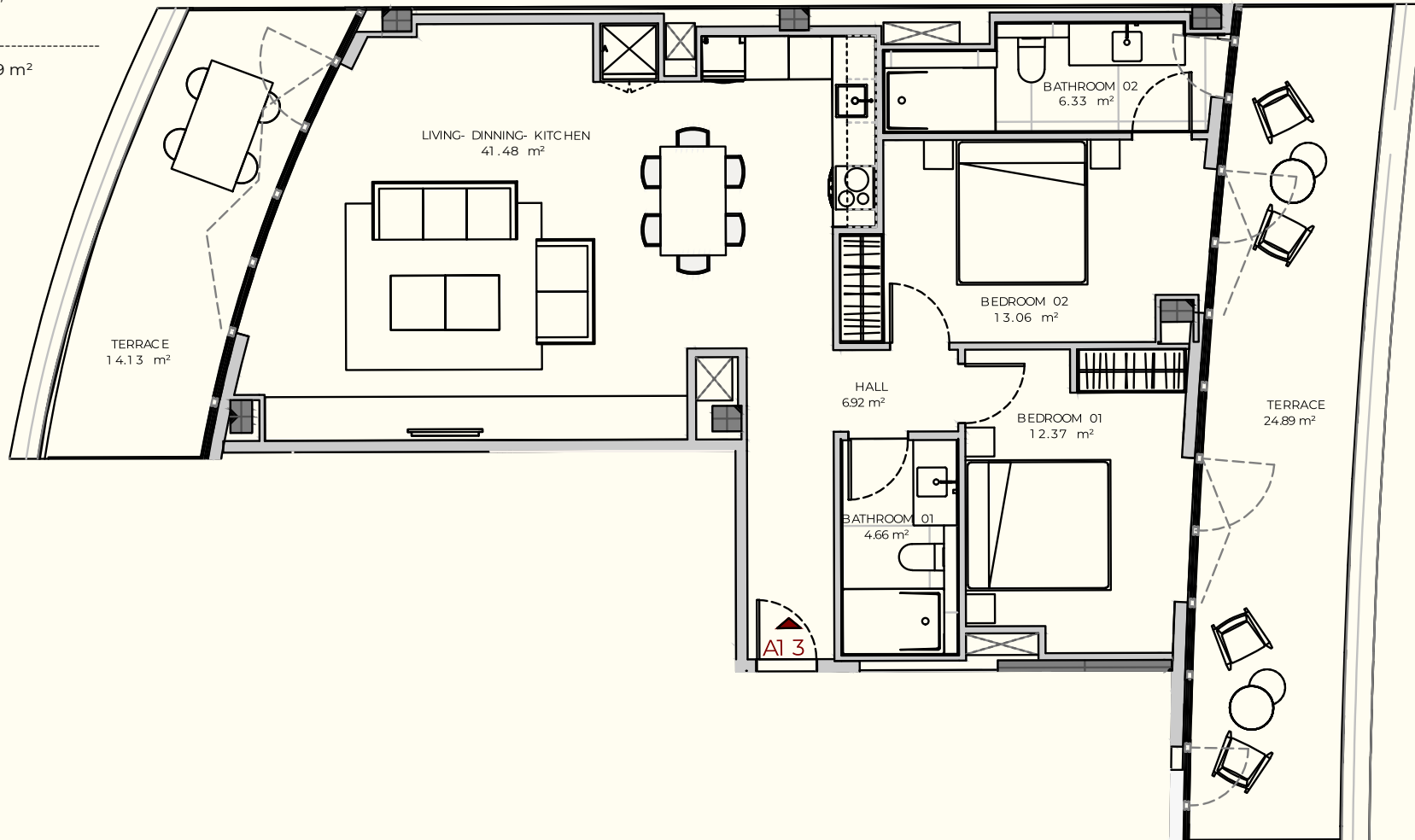
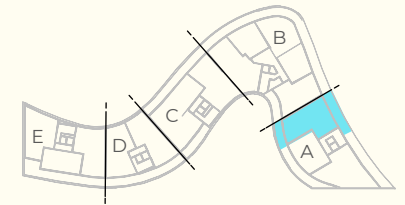
Apartment A13

- Living-Dinning-Kitchen 41,48 m²
- Bedroom 01 – 12,37 m²
- Bedroom 02 – 13,06 m²
- Bathroom 01 – 4,66 m²
- Bathroom 02 – 6,33 m²
- Hall – 6,92 m²
- Terrace 1 (covered) – 14,13 m²
- Terrace 2 (covered) – 24,89 m²
- *Net areas

 Gross interior area 99,09 m²
Gross area 144,39 m²



RF
 PF
 3F
 2F
1F
 GF
 BF

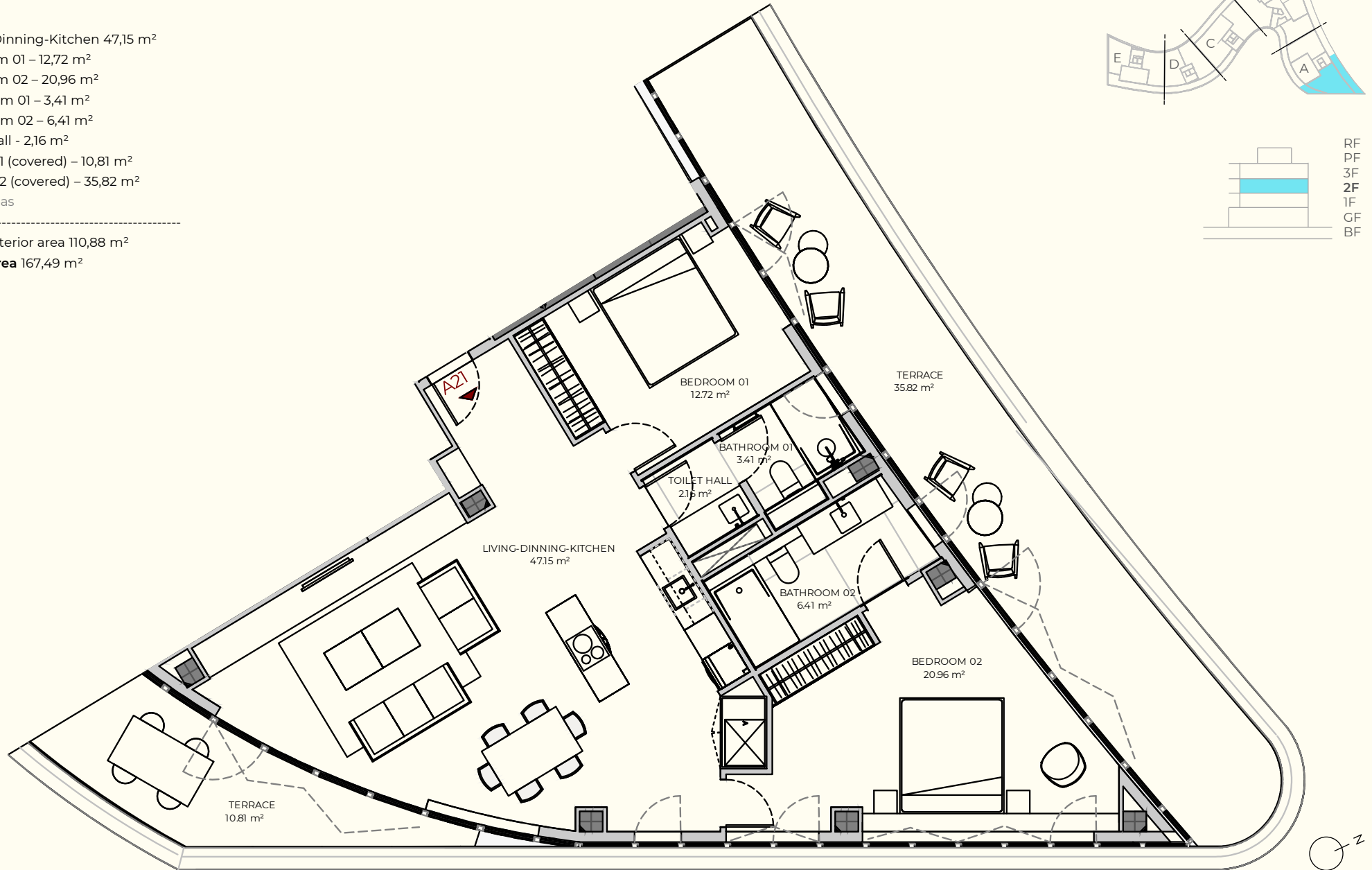
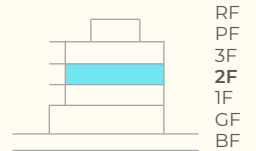
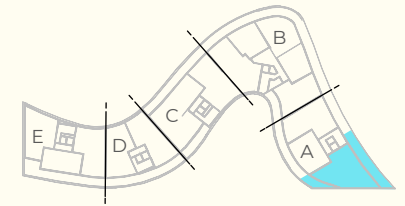


*These plans collect information from the Basic Project and may undergo changes due to aspects of project development, design, physical execution of the work, regulatory provisions that arise during execution, or property decisions that affect the entire project.

Apartment A21

- Living-Dinning-Kitchen 47,15 m²
- Bedroom 01 – 12,72 m²
- Bedroom 02 – 20,96 m²
- Bathroom 01 – 3,41 m²
- Bathroom 02 – 6,41 m²
- Toilet Hall - 2,16 m²
- Terrace 1 (covered) – 10,81 m²
- Terrace 2 (covered) – 35,82 m²
- *Net areas

 Gross interior area 110,88 m²
Gross area 167,49 m²

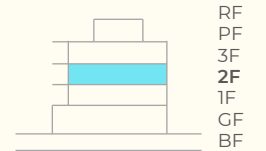
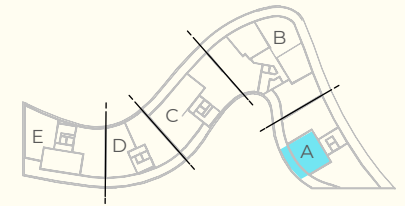
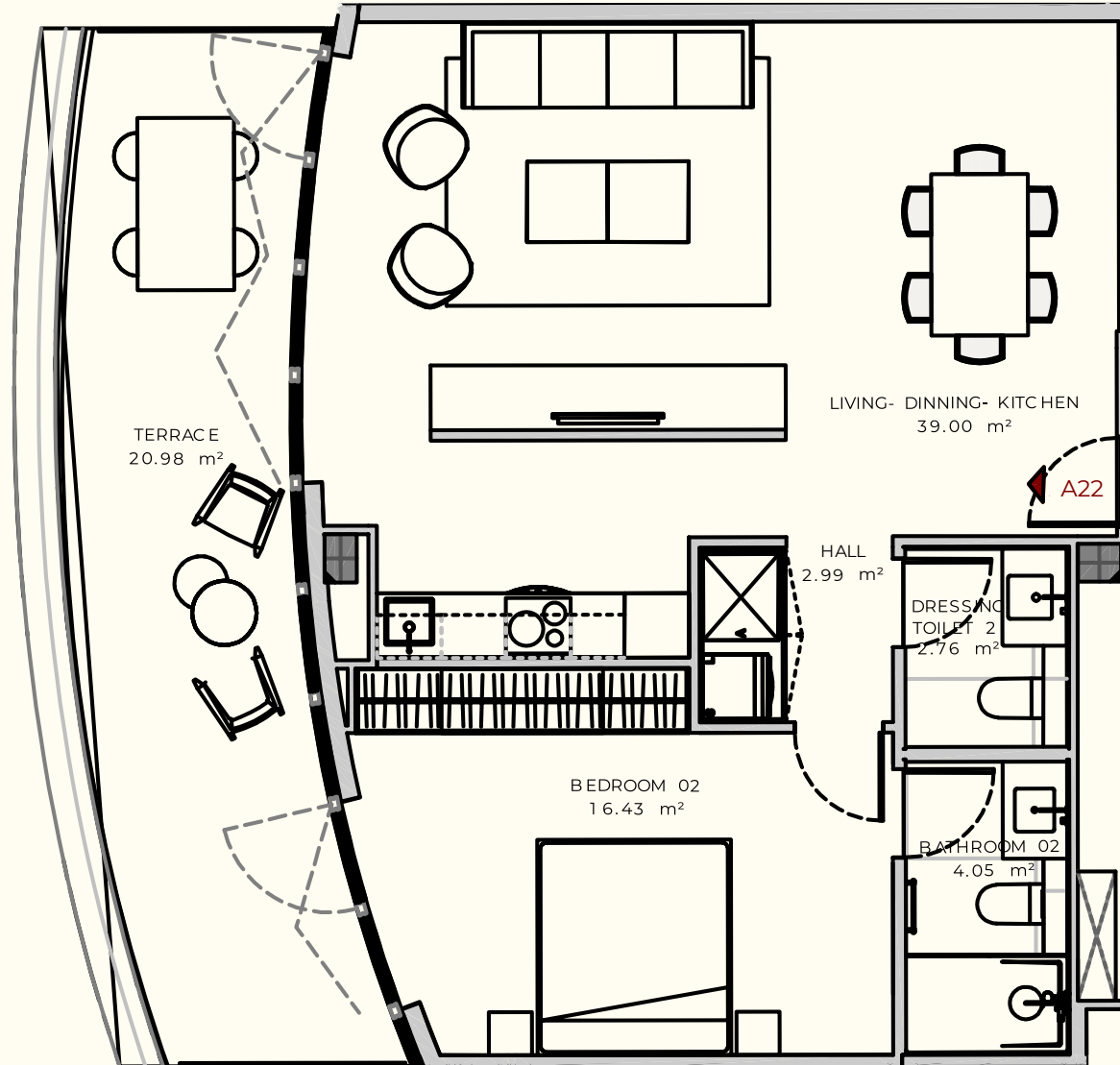


*These plans collect information from the Basic Project and may undergo changes due to aspects of project development, design, physical execution of the work, regulatory provisions that arise during execution, or property decisions that affect the entire project.

Apartment A22

Living-Dinning-Kitchen 39,00 m²
 Bedroom – 16,43 m²
 Bathroom – 4,05 m²
 Dressing Toilet – 2,76 m²
 Hall – 2,99 m²
 Terrace 1 (covered) – 20,98 m²
 *Net areas

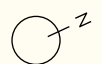
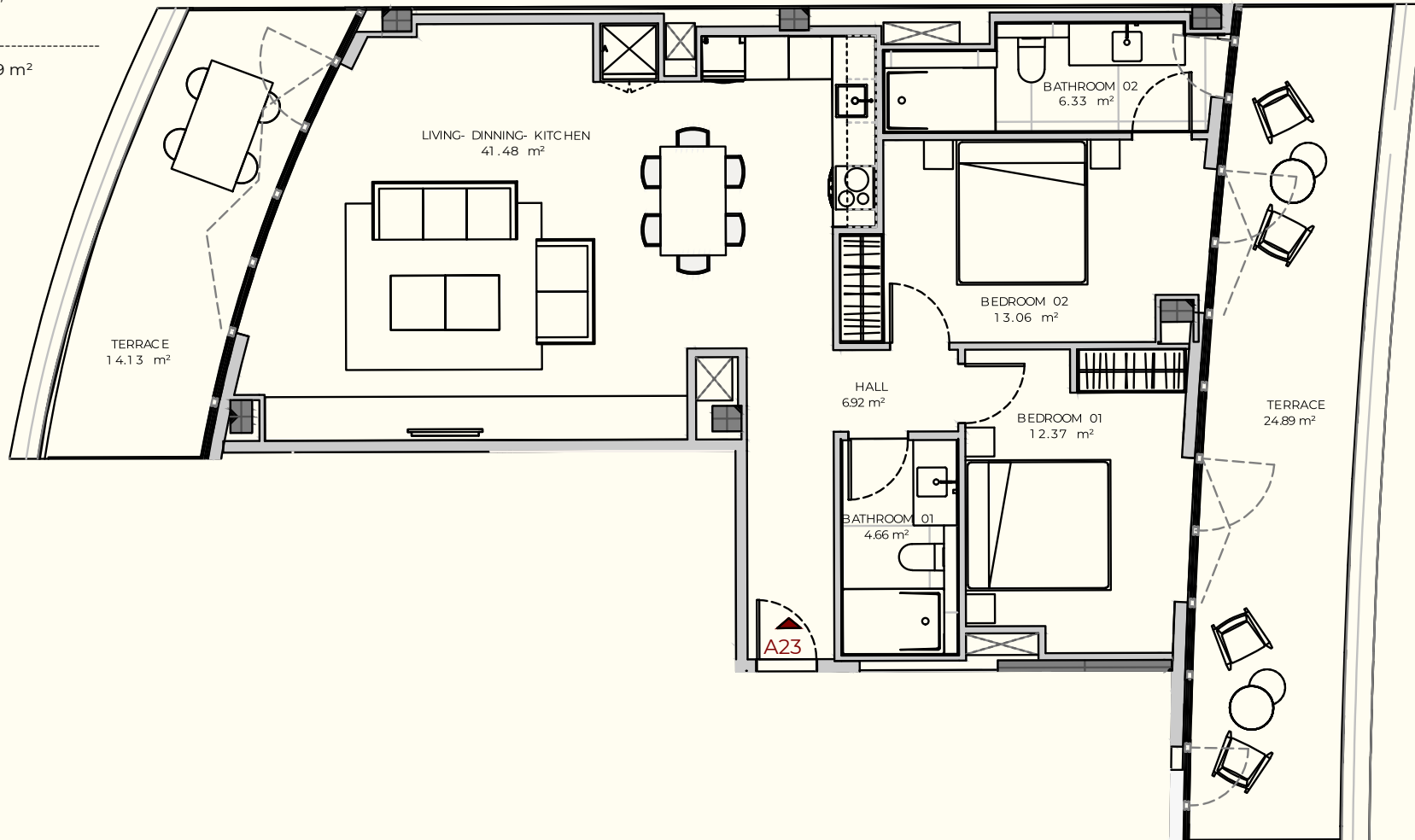
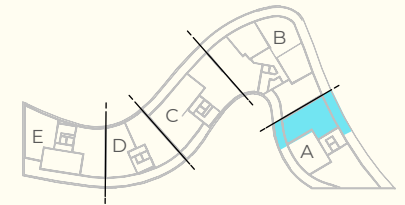
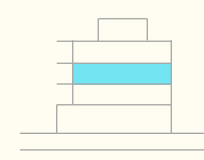
 Gross interior area 72,95 m²
Gross area 97,31 m²



Apartment A23

- Living-Dinning-Kitchen 41,48 m²
- Bedroom 01 – 12,37 m²
- Bedroom 02 – 13,06 m²
- Bathroom 01 – 4,66 m²
- Bathroom 02 – 6,33 m²
- Hall – 6,92 m²
- Terrace 1 (covered) – 14,13 m²
- Terrace 2 (covered) – 24,89 m²
- *Net areas

 Gross interior area 99,09 m²
Gross area 144,39 m²



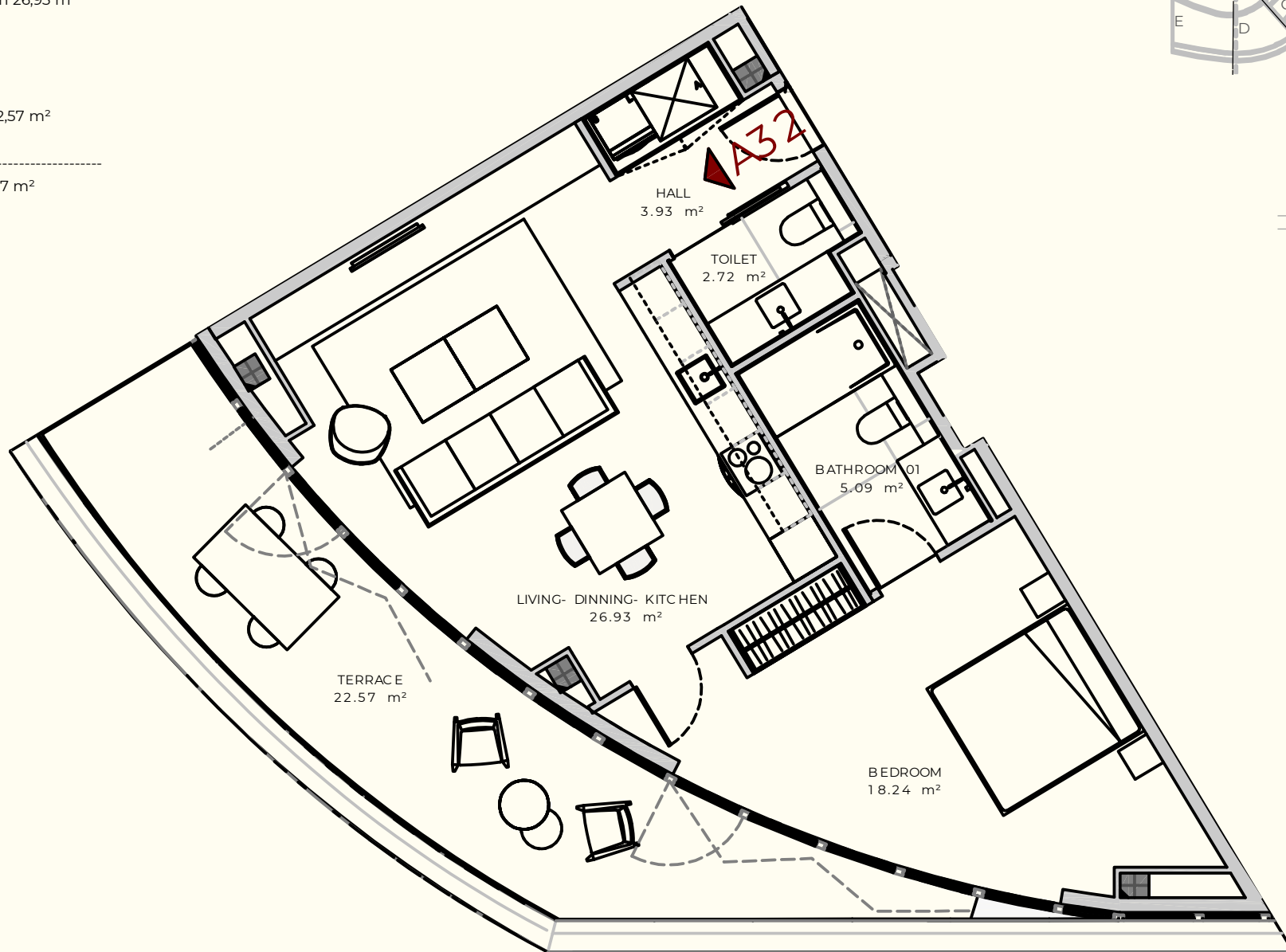
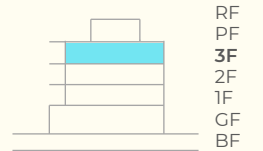
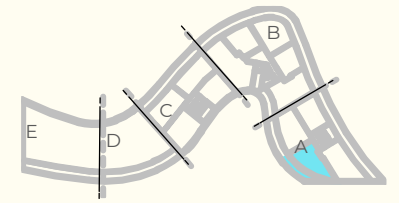
Apartment A32

Living-Dinning-Kitchen 26,93 m²
 Bedroom - 18,24 m²
 Bathroom - 5,09 m²
 Toilet - 2,72 m²
 Hall - 3,93 m²
 Terrace 1 (covered) - 22,57 m²

*Net areas

Gross interior area 68,17 m²

Gross area 96,25 m²



Apartment A33

Living-Dinning-Kitchen 38,98 m²

Bedroom – 14,24 m²

Bathroom – 5,56 m²

Toilet– 2,46 m²

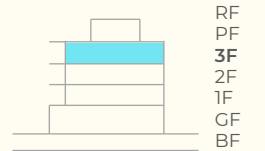
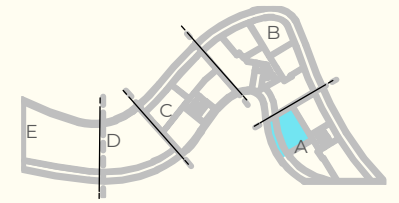
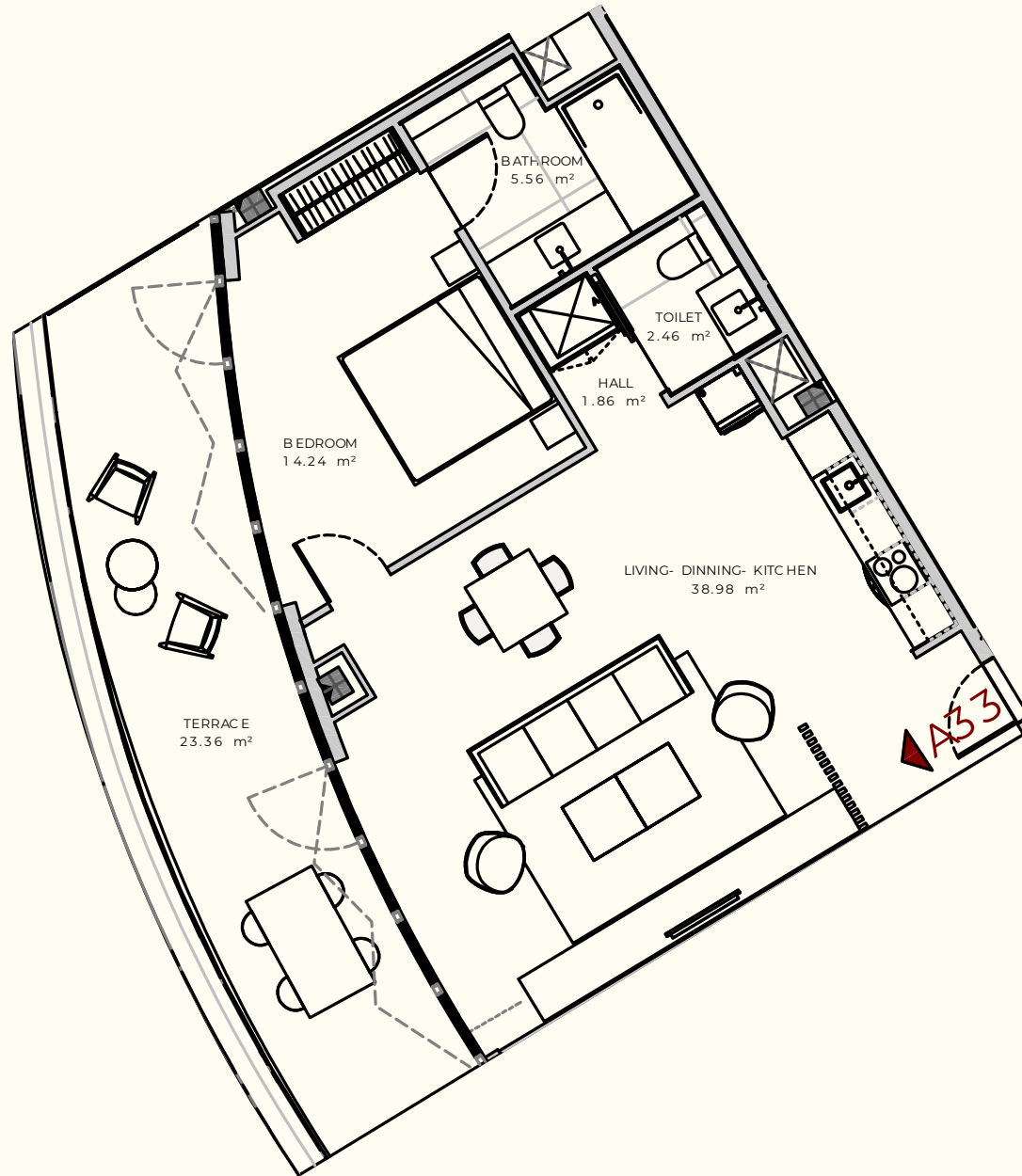
Hall – 1,86 m²

Terrace 1 (covered) – 23,36 m²

*Net areas

Gross interior area 73,36 m²

Gross area 100,91 m²



v